

ECO COMMERCIAL

AN ECO WINDOW SYSTEMS BRAND

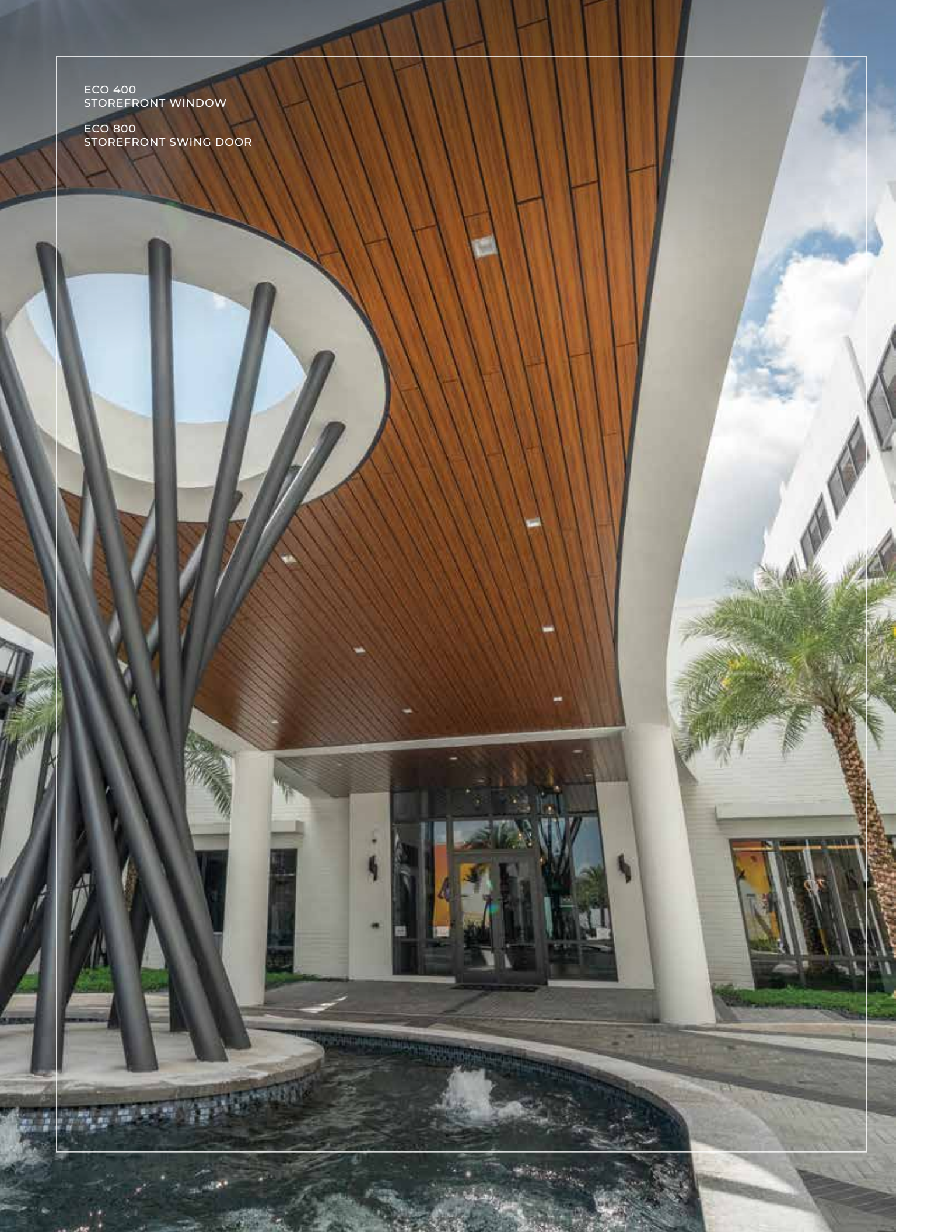


A FAMILY OF BRANDS



ECO 400
STOREFRONT WINDOW

ECO 800
STOREFRONT SWING DOOR



Eco Commercial by Eco Window Systems manufactures commercial products that deliver solutions for commercial and residential applications in the industry.

Our windows and doors are built to withstand and protect. Eco Commercial meets the challenges of commercial high-end residential needs, including retail, condo, luxury high rises, multifamily, education, hotels, resorts, healthcare, mixed use, and more.



EC 
COMMERCIAL

WINDOWS 04

DOORS 06

RAILINGS 08

NON-IMPACT 09

FRAME & GLASS 10
OPTIONS

400 STOREFRONT WINDOW



- Available in White, Bronze, Clear Anodized
- 5" Frame Depth
- Max Width: 56 1/2" (DLO), 61 3/4" (frame)
- Max Height: 150 3/4" (DLO), 156" (frame)
- Max Design Pressure: +80/-130 PSF (Large Missile)
+90/-130 PSF (Small Missile)
- Florida Product Approval
- Heavy Gauge Aluminum T6 alloy profile
- This series units can join each other to form a large wall

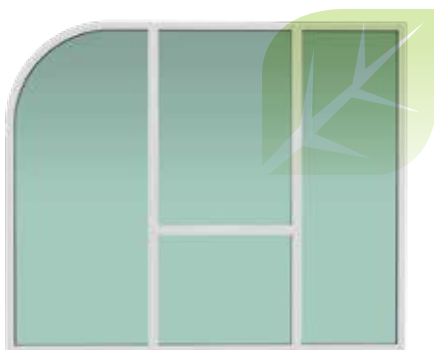
STANDARD FEATURES:

- 9/16" Heat Strengthened Laminated Glass (PVB)
- Clear, Gray, Bronze, Solexia Green, Azuria, Obscure (White Interlayer)
- Double weatherstripping
- Self-Mating Snap in panels
- Stainless Steel Assembly Screws
- Extruded snap on Glazing Beads
- Internally wet glazed

OPTIONAL:

- 1 3/16" Insulated Laminated glass
- 9/16" Heat Strengthened Laminated Glass (SG)
- Aluminum/Steel reinforcement
- Aluminum Slats (glass substitute)

450 FRONTSET STOREFRONT WINDOW



- Available in White, Bronze, Clear Anodized
- Max Width: 60 3/4" (DLO) at 90" frame height
- Max Height: 108" (frame) at 42 3/4" DLO width
- Florida Product Approval
- Max Design Pressure: +80/ -90 PSF
- Large & Small Missile Impact

STANDARD FEATURES:

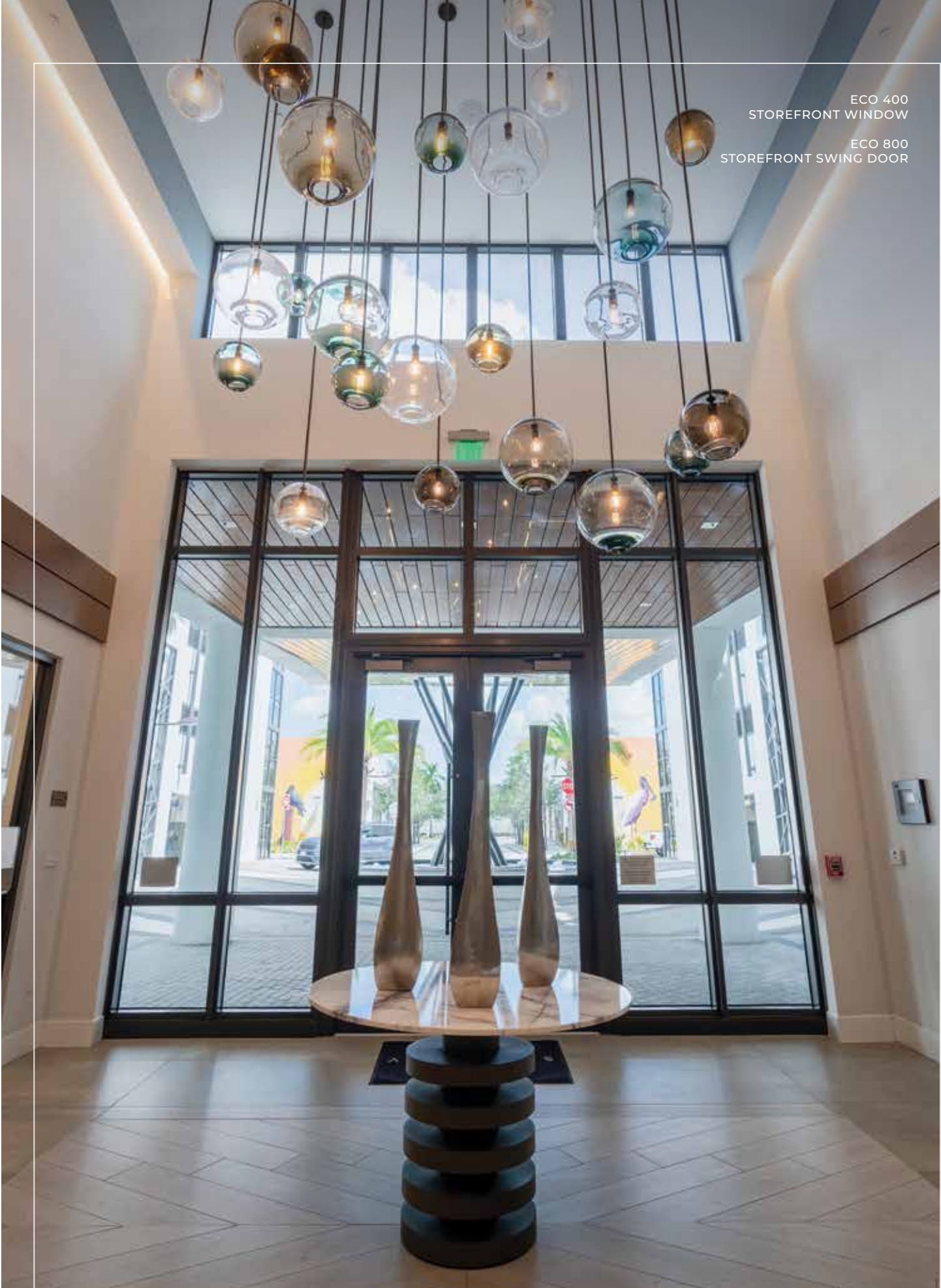
- 9/16" HS/HS (PVB)
- Clear, Gray, Bronze, Solexia Green, Azuria, Obscure (White Interlayer)
- 1 3/4" x 4" deep system
- Double weatherstripping
- Stainless steel assembly screws
- Extruded aluminum snap on glazing beads
- Internally wet glazed

OPTIONAL:

- 1 3/16" Insulated laminated glass with argon
- Steel reinforcement
- 9/16" Heat Strengthened Laminated Glass (SG)

ECO 400
STOREFRONT WINDOW

ECO 800
STOREFRONT SWING DOOR



800 STOREFRONT DOOR



- Available in White, Bronze, Clear Anodized
- Maximum Width: (X) 45 9/16" (XX) 87 1/2"
- Maximum Height: 120", 132" with transom
- Frame Depth: 5"
- Maximum Design Pressure: +80/ -80 PSF
- Large & Small Missile Impact
- Heavy gauge aluminum T6 alloy profile
- Florida Product Approval

STANDARD FEATURES:

- 9/16" HS/HS laminated
- Clear, Gray, Bronze, Solexia Green, Azuria, Obscure (White Interlayer)
- Commercial (ADA) threshold w/o riser
- Extruded snap-on glazing bead
- 4 1/2" butt hinges
- 3 point lock active leaf / 2 point lock inactive leaf
- Push/Pull FEATURES
- 4 1/4" standard bottom rail

OPTIONAL:

- 1 3/16" Insulated laminated glass with argon
- Energy Efficient LoE Coatings
- Commercial threshold w/ riser
- Concealed vertical rod panic device
- Electric panic device
- Sidelites – Series 400
- Integral transom
- 10" bottom rail
- 2 1/2", 4 1/4", and 1" colonial muntins
- Intermediate division for endurance and safety

810 DOOR



- Available in White, Bronze, Clear Anodized
- Maximum Width: (X) 45 9/16" (XX) 87 1/2"
- Maximum Height: 120", 132" with transom
- Frame Depth: 5"
- Maximum Design Pressure: +80/ -80 PSF
- Large & Small Missile Impact
- Heavy gauge aluminum T6 alloy profile
- Florida Product Approval

STANDARD FEATURES:

- 9/16" HS/HS laminated glass
- Clear, Gray, Bronze, Solexia Green, Azuria, Obscure (White Interlayer)
- Extruded snap-on glazing bead
- 3 point lock active leaf / 2 point lock inactive leaf
- 1 5/8" residential bumper threshold
- Lever Handle

OPTIONAL:

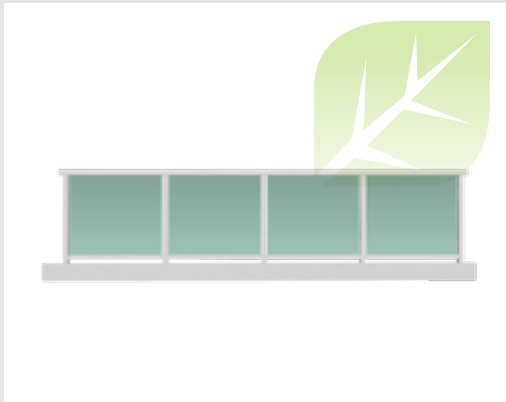
- Integral transom
- 10" bottom rail
- Sidelites
- Intermediate division
- 1 3/16" Insulated laminated glass



1000 RAILINGS



1000 RAILINGS



- Available in White, Bronze, Clear Anodized
- Maximum Width: 48" post spacing
- Maximum Height: 45" (including the top cap)
- Frame Depth: 3 1/4"
- Maximum Design Pressure: +120/-120PSF
- Miami Dade County Approval
- Large & Small Missile Impact

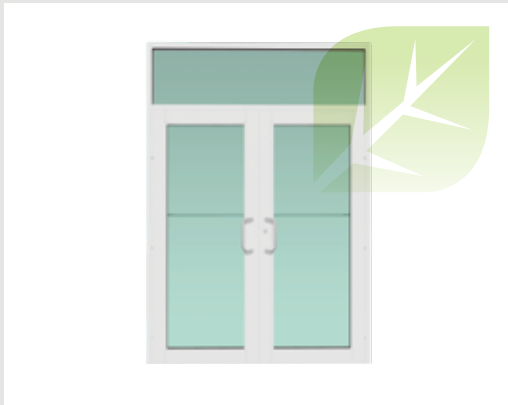
STANDARD FEATURES:

- 7/16" Laminated Glass with 0.035 SG Interlayer
- Clear, Gray, Bronze, Solexia Green, Azuria, Obscure (White Interlayer)
- They can join each other to form a large balcony.
- Round Top Finishing Cap

OPTIONAL:

- Angular Top Finishing Cap
- The balcony can describe a curve
- Glazing: Front Glaze or Center Glaze

E10 NON-IMPACT NARROW INTERIOR DOOR



- Maximum Width: (X) 45 9/16" (XX) 87 1/2"
- Storefront Max. Size: 6' X 8'
- Pressure Design: not required
- Water Resistance: not water rated

STANDARD FEATURES:

- 1/4" tempered glass

OPTIONAL:



ECO 400
STOREFRONT WINDOW

ECO 800
STOREFRONT SWING DOOR



FRAME FINISHES

Frame finish colors may not be accurate representations.



White



Bronze



Clear
Anodized

GLASS TINTS

Glass tint colors may not be accurate representations.



Clear



Gray



Bronze



Green



Azuria



White
Glass



BENEFITS OF WORKING WITH ECO COMMERCIAL

- Specification writing
- Optimized Product selection (Performance, Aesthetic Design Intent, and Project Budget)
- Custom product design consultation
- Code compliance assessment (ADA, Turtle, Energy)
- Engineering Support
- Site specific testing
- LEED assistance
- Material samples (Corners to full Mock-ups)
- Professional Project Management
- Jobsite deliveries
- In House Service Techs
- Service/ Quality Control field visits
- Delivery on time and complete
- Robust Warranty – Transferability, Residential Intruder protection, etc



A FAMILY OF BRANDS



PGT



Anlin

e//b



ECOCOMMERCIAL.COM | 7751 NW 79TH PL, MEDLEY, FL 33166

©2024 ECO COMMERCIAL PRODUCTS.

ECOC0224